

PCIe 2.5G 4-Speed Multi-Gigabit PoE Network Adapter

User Manual

Ver. 1.00

**All brand names and trademarks are properties of their
respective owners.**

Contents:

Chapter 1: Introduction	3
1.1 Features.....	3
1.2 Systems Requirements.....	3
1.3 Package Contents.....	4
Chapter 2: Getting Started	4
2.1 Hardware Layout	4
2.2 Hardware Installation	6
2.3 Driver Installation.....	6
2.3.1 Getting software driver	6
2.3.2 Installation for Windows.....	7
2.4 Verifying the installation.....	7
2.4.1 Verifying for Windows.....	7

Chapter 1: Introduction

1.1 Features

- Supports 10BASE-T, 100BASE-T, 1000BASE-T and 2.5GBASE-T
- Supports 10/100/1000/2500 Mbps Ethernet
- Compliant to PCIe 2.0
- Supports Preboot eXecution Environment (PXE)
- LED indicators indicate status of link/ activity and speed
- Supports Jumbo Frames up to 9K
- Supports WOL
- No need to install drivers on Linux
- PoE output power 25.5W
- SATA power connector for connecting to PSU to ensure enough power is provided if and only if the PCIe slot wattage is not 75W

1.2 Systems Requirements

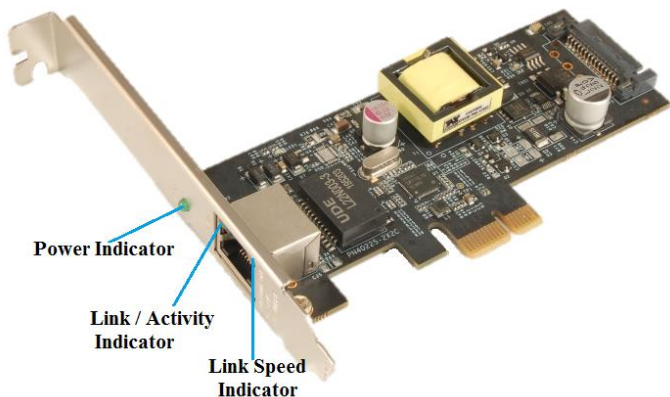
- Windows 10 RS5 or later (64 bits Only)
- Linux kernel 5.8 or later
- Available 1-lane PCIe 2.0 slot

1.3 Package Contents

- 1 x PCIe 2.5G 4-Speed Multi-Gigabit PoE Network Adapter
- 1 x User Manual

Chapter 2: Getting Started

2.1 Hardware Layout



Link / Activity Indicator:

- When the LED is off, there is no link between the PCIe 2.5G 4-Speed Multi-Gigabit PoE Network Card and the network.
- When the LED is on, a link is established, but there is no traffic on the network.
- When the LED is flashing, there is traffic on the network to which the PCIe 2.5G 4-Speed Multi-Gigabit PoE Network Card is connected.

Link Speed Indicator:

- Orange: The LED indicator lights orange when a 2.5 Gbps device is connected to the adapter.
- Green: The LED indicator lights green when a 1Gbps device is connected to the adapter
- Off: The LED indicator goes out when a 10Mbps/100Mbps device is connected to the adapter

Power Indicator:

- When the LED is off, there is no voltage output.
- When the LED is on, there is voltage output.

2.2 Hardware Installation

1. Turn off the power to your computer.
2. Unplug the power cord and remove your computer's cover.
3. Remove the slot bracket from an available PCIe slot.
4. To install the card, carefully align the card's bus connector with the selected PCIe slot on the motherboard. Push the board down firmly.
5. Replace the slot bracket's holding screw to secure the card.
6. Secure the computer cover and reconnect the power cord.

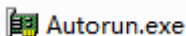
2.3 Driver Installation

2.3.1 Getting software driver

1. Navigate to www.sunrichtech.com.hk and enter ordering code (N-680) in the search field.
2. Click the "Manual & Download" tab.
3. Click "Download Drivers".
4. Extract the content of the downloaded file into a folder for driver installation.

2.3.2 Installation for Windows

1. Please locate and double-click on the Autorun.exe file to launch the install program.



2. Follow the instructions on screen to install the driver.

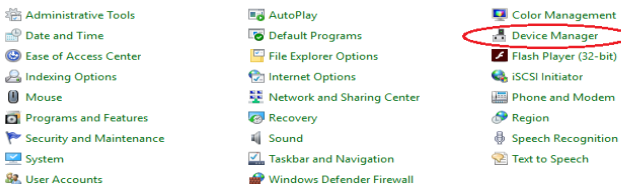
2.4 Verifying the installation

2.4.1 Verifying for Windows

1. Click on the “**Device Manager**” tab in the Windows Control Panel.

Start > Windows> Control Panel > Device Manager

Adjust your computer's settings



2. Expand "Network adapters", you can read “**Intel(R) Ethernet Controller I255-V**” in the Device Manager.

